



G:B:D:

GI.BI.DI. S.r.l.

Via Abetone Brennero, 177/B
46025 Poggio Rusco (MN) - ITALY
Tel. +39.0386.52.20.11
Fax +39.0386.52.20.31
E-mail: comm@gibidi.com

Numero Verde: 800.290156

www.gibidi.com

:BARR500

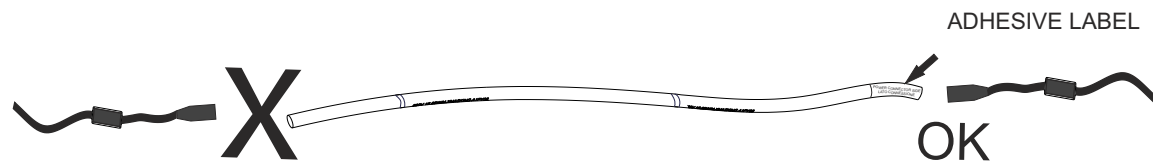
CE

ACCESSORI BARR500 - (AJ70250)
ACCESSORI BARR500 - (AJ70260)
ACCESSORI BARR500 - (AJ70270)
ACCESSORI BARR500 - (AJ70280)

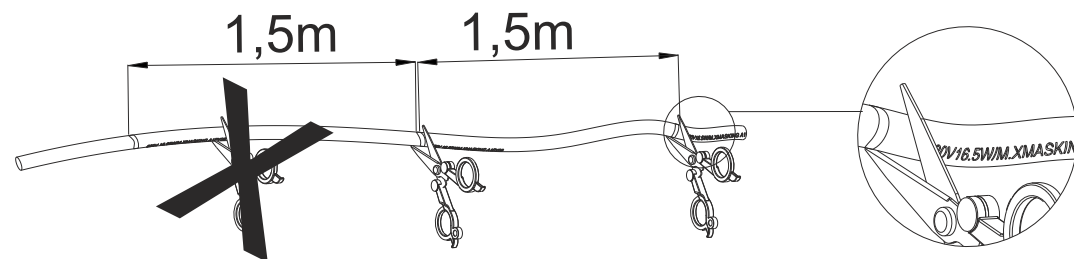
Led lights Kit for boom 230 Vac
INSTALLATION INSTRUCTIONS

UK



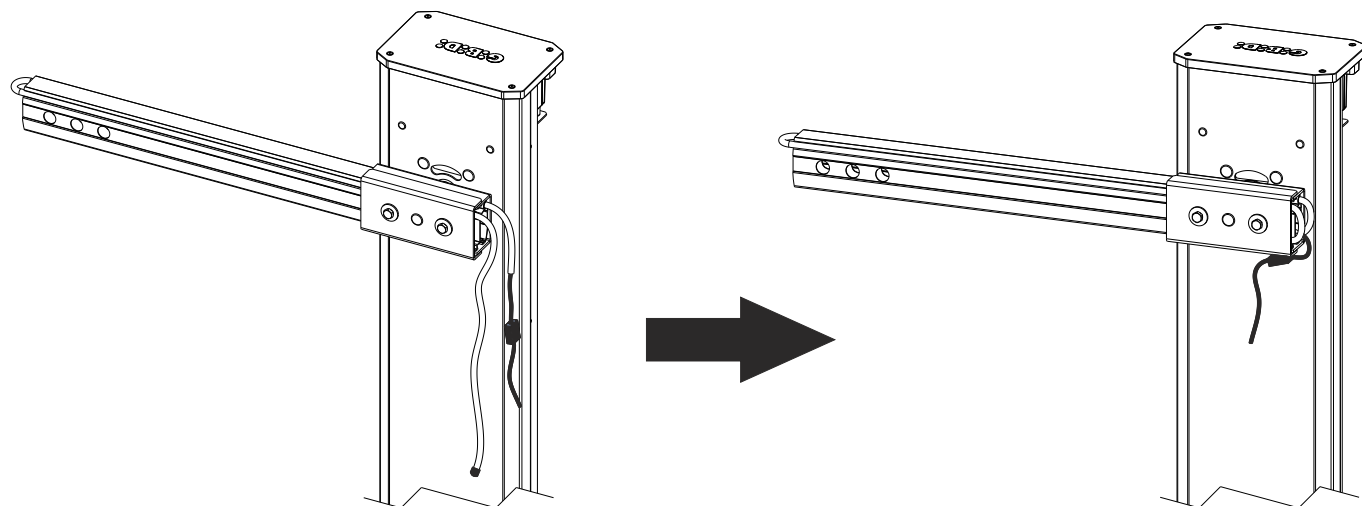


WARNING: This rope light uses LED technology, the power connector must be connected to the rope end marked with the special adhesive label.

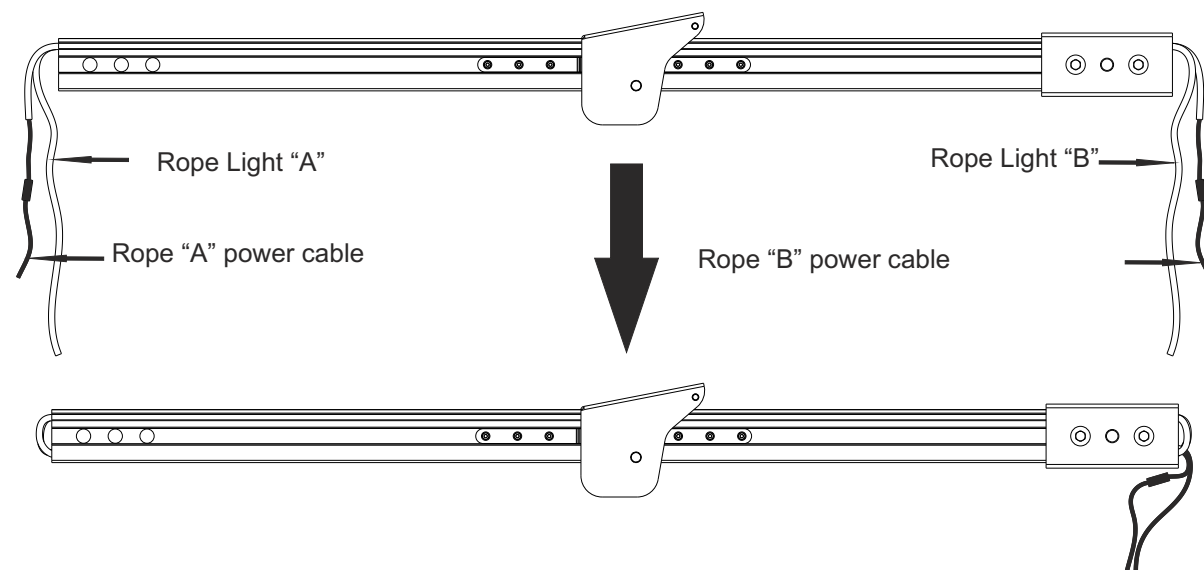


WARNING: Cut this rope according to the cutting marks printed on the rope itself.

Lights kit installation for boom 100x66



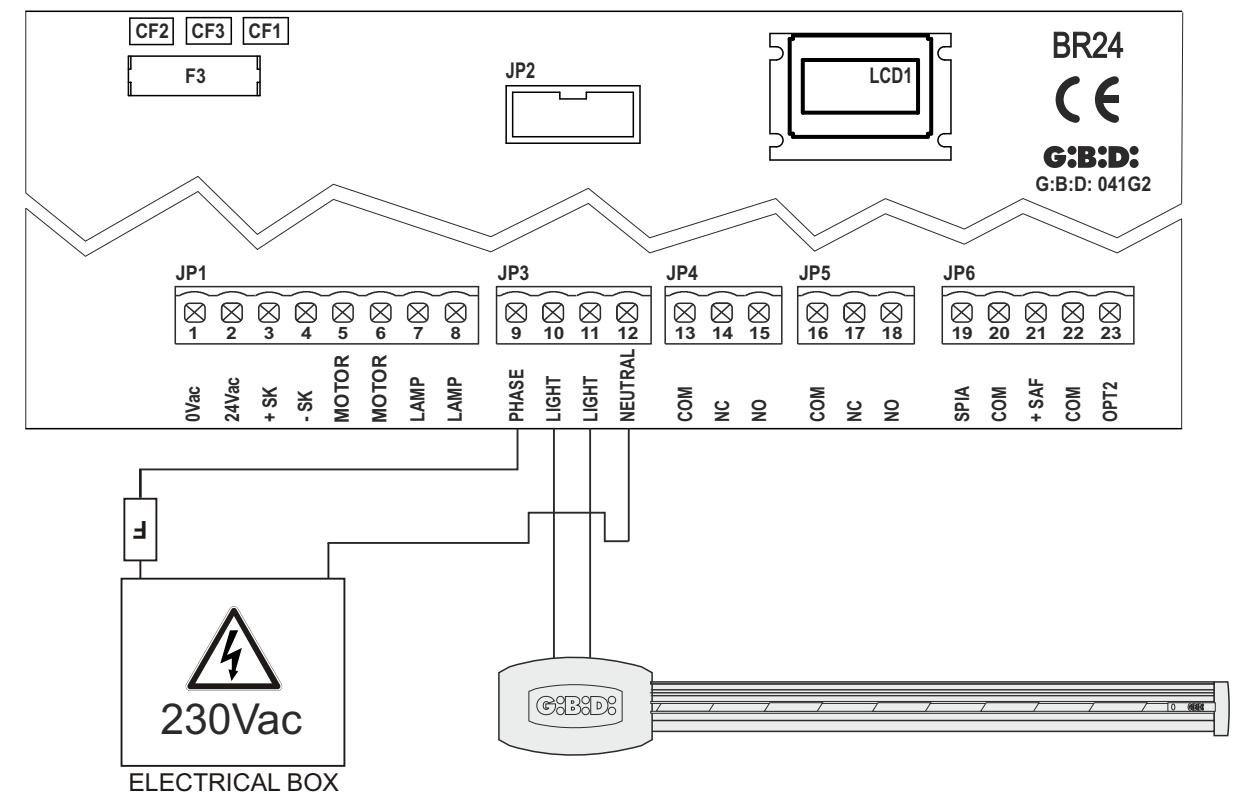
Lights kit installation for boom 100x66 with AJ01130



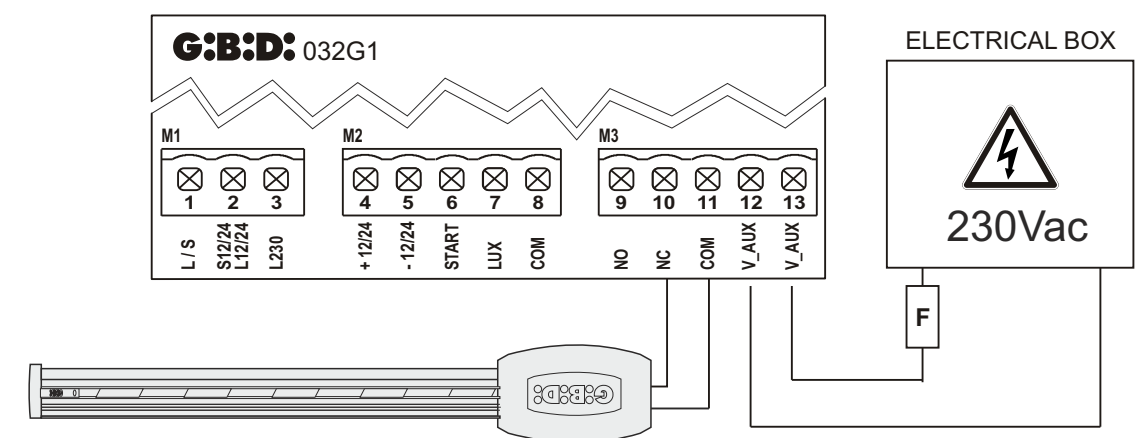
Refer to control unit manual for cable connections

ELECTRICAL CONNECTION

BR24



CL100



UK

! PLEASE READ CAREFULLY THIS MANUAL BEFORE PROCEEDING WITH THE INSTALLATION.

WARNINGS: This product has been tested in G.I.B.I.D.I. verifying the perfect correspondence of the characteristics to the current directive. G.I.B.I.D.I. S.r.l. reserves the right to modify the technical data without prior notice depending on the product development.

DISPOSAL: G.I.B.I.D.I. advises recycling the plastic components and to dispose of them at special authorised centres for electronic components thus protecting the environment from polluting substances.

