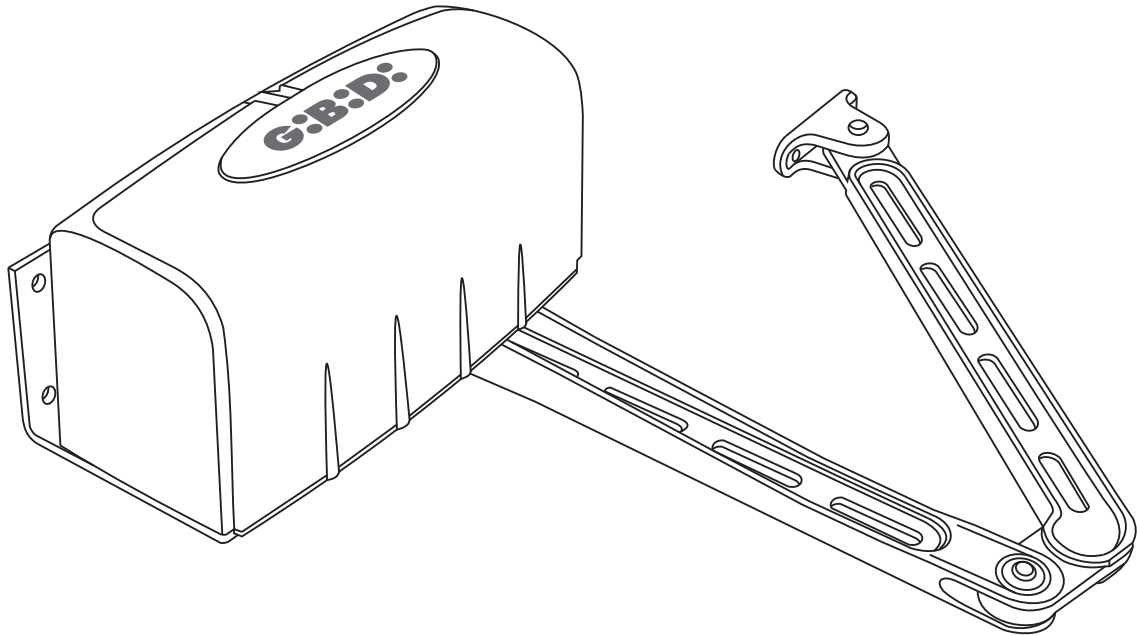


G:B:D:



:ART

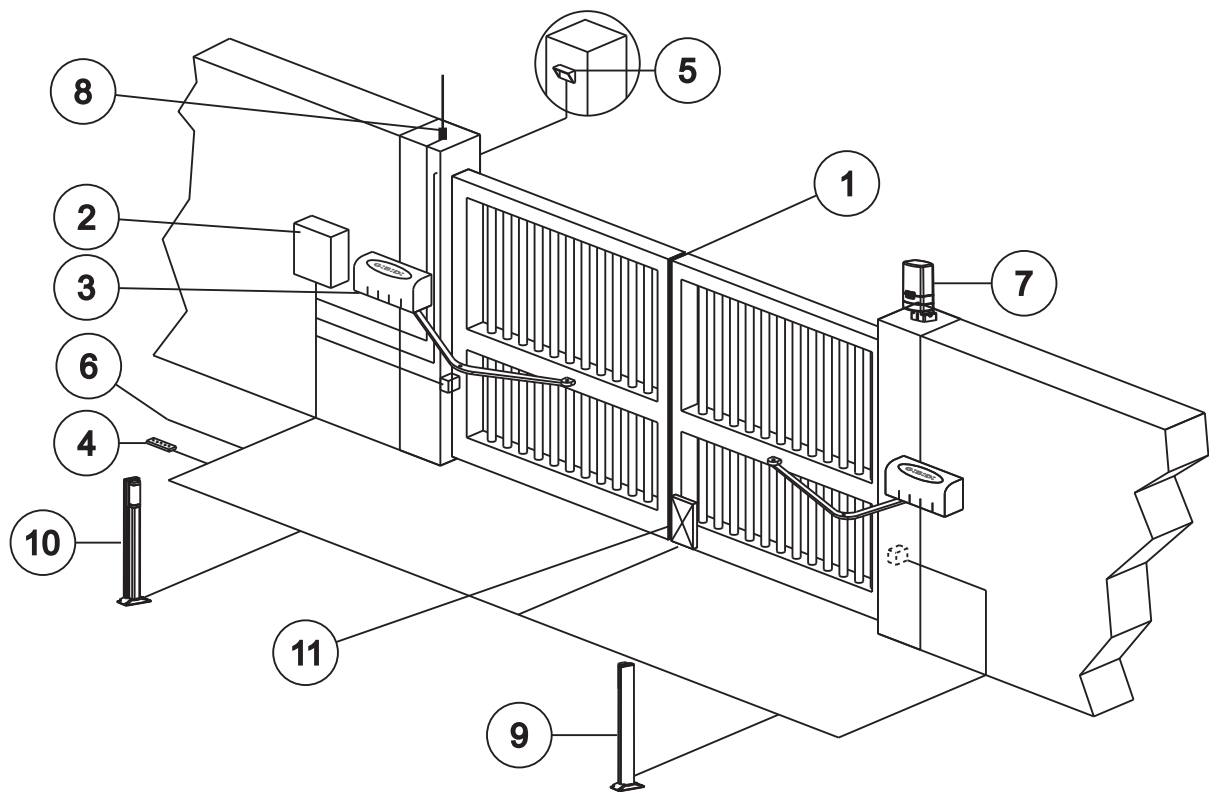
CE

ART (5000 - 5012 - 5024)

Electromechanical operator
INSTRUCTIONS FOR INSTALLATION

UK

ELECTRICAL CONNECTIONS



	ART5000	ART5012	ART5024
ALIMENTATION/POWER SUPPLY	220/230 V-50Hz	12 Vdc	24 Vdc
ABSORBED POWER	200 W	70 W	100 W
ABSORBED CURRENT	1 A	6 A	5 A
MOTOR OVERLOAD	140°	-	-
CAPACITOR	10 μ F	-	-
MAX. ANGULAR SPEED	7,8 °/sec	7,6 °/sec	5,6 °/sec
TIME TO OPEN UP TO 90°	17 s	18 s	24 s
MAX. TORQUE	250 Nm	220 Nm	220 Nm
WORKING TEMPERATURE	-20°C +60°C	-20°C +60°C	-20°C +60°C
CYCLES PER HOUR (FULL OPEN & CLOSE)	20 Max	40 Max	40 Max
CYCLES PER DAY	200	200	200
MAX LEAF LENGHT	3 m	3 m	3 m
PROTECTION AGAINST WETNESS	IP53	IP53	IP53

UK

- 1 Sensitive frame.
- 2 Electronic equipment container.
- 3 Operators. **ART5000**: cable with 7 conductors of 1.5 mm².
ART5012, ART5024: cable with 5 conductors of 1.5 mm² for distances max.3m from the control unit; for bigger distances cable of 2.5mm² (max.6m). In both cases 3 conductors are used for the limit switch connection.
- 4 Push-button panel; cable with 5 conductors of 0.5 mm².
- 5 Key-selector; cable with 3 conductors of 0.5 mm².
- 6 Power supply line to equipment 220-230V 50-60Hz, cable with 3 conductors of min. 1.5 mm² (follow regulations in force).
- 7 Flashing light; cable with 2 conductors of 1,5 mm².
- 8 Antenna.
- 9 Photocell transmitter; cable with 2 conductors of 0.5 mm².
- 10 Photocell receiver; cable with 4 conductors of 0.5 mm².
- 11 Electric lock.

WARNING: It is important that an omnipolar magneto-thermal switch with a contact opening of minimum 3 mm is installed on the power supply line, upstream of the equipment.

PRELIMINARY WARNINGS

UK

PRELIMINARY WARNINGS

Check that the gate structure meets the standards laid down in the regulations in force and that the gate movement is linear and without friction. It is recommended to carry out any operations necessary before installing the operator and in particular to always fit the mechanical end-stops.

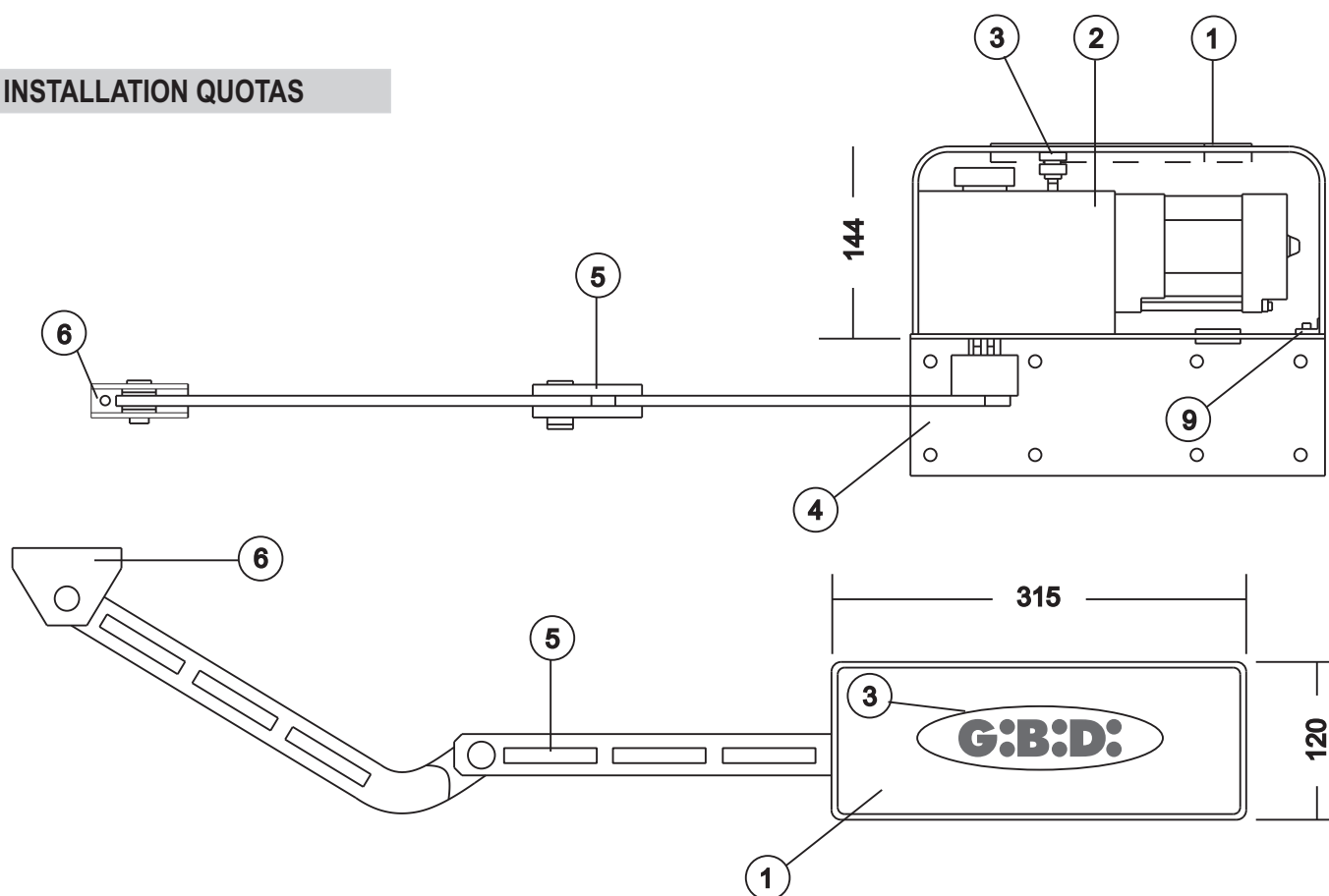
OPERATOR INSTALLATION

Preliminary checks:

- Check that the gate structure is sufficiently robust. In any event, the operator must push the gate at a reinforced point.
- Check that the gates move manually without effort for their entire travel.
- Check that the gate stops have been installed.
- If the gate is not a new installation, check the state of wear of all the components and repair or replace the defective or worn parts.

The reliability and safety of the automated device is directly affected by the state of the gate structure.

INSTALLATION QUOTAS



APPLICATION OF THE OPERATOR FOR MAX. 90° WING OPENING

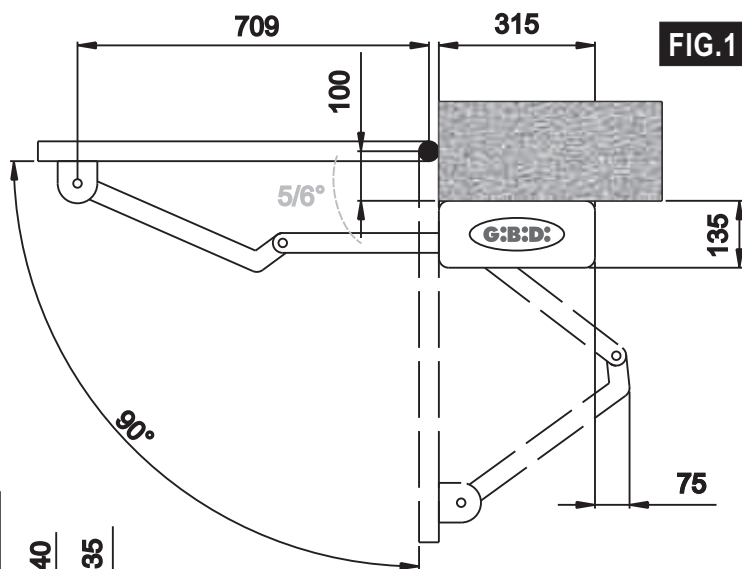
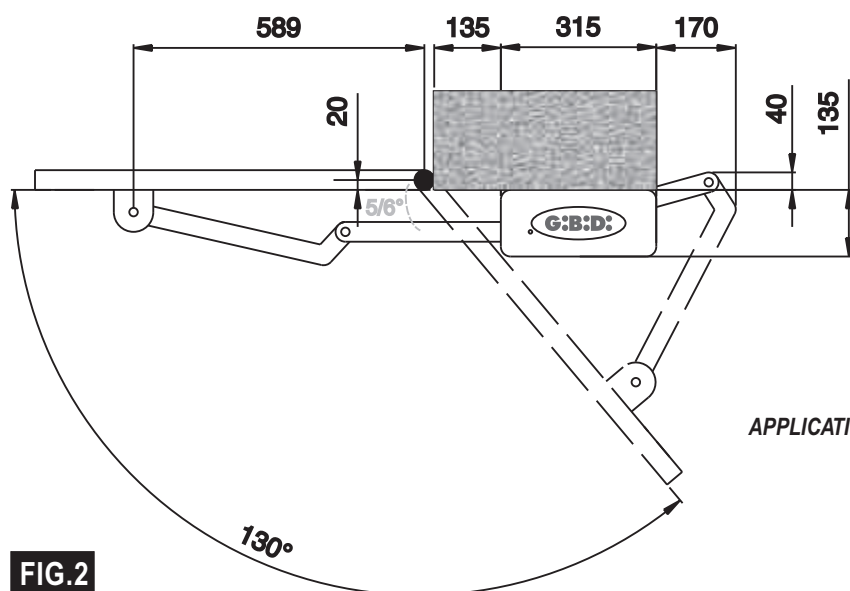


FIG. 1



APPLICATION OF THE OPERATOR FOR OVER 90°

FIG. 2

INSTALLATION OF THE OPERATORS

UK

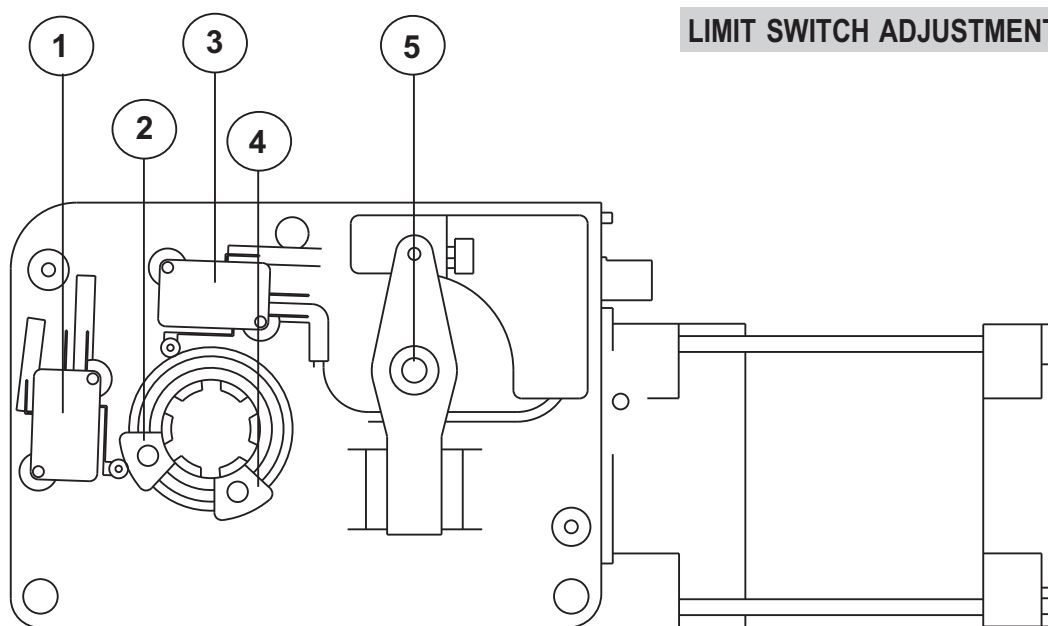
(see Page 5)

- 1 Operator cover.
- 2 Operator “**ART5000 - ART5012 - ART5024**”.
- 3 Unlocking device for manual operation.
- 4 Fastening plate of operator to pillar.
- 5 Articulated arm.
- 6 Fastening bracket of articulated arm to gate.
- 7 Gate.
- 8 Pillar.
- 9 Plate with screw for fixing the cover.

Fix the operator to the pillar, positioning it as shown in **Fig. 1** if the wing opening is not more than 90°, and as in **Fig. 2** if it is more (see Page 5); in this case, the distance “A” must be sufficient for the wing to open by the desired angle.

WARNING: The first part of the articulated arm (5) must be open at least 5/6° from the gate into closed position

LIMIT SWITCH ADJUSTMENT

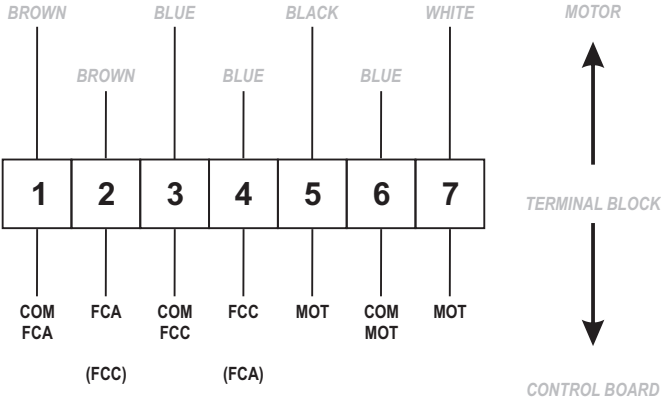
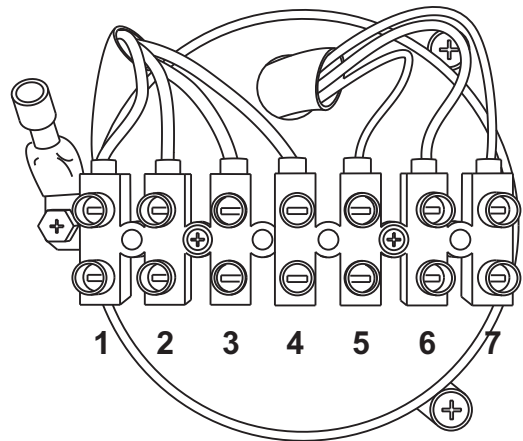


UK

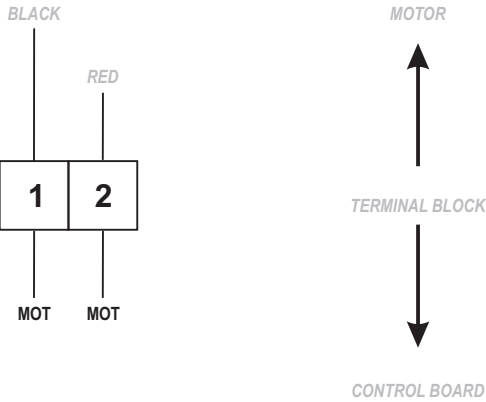
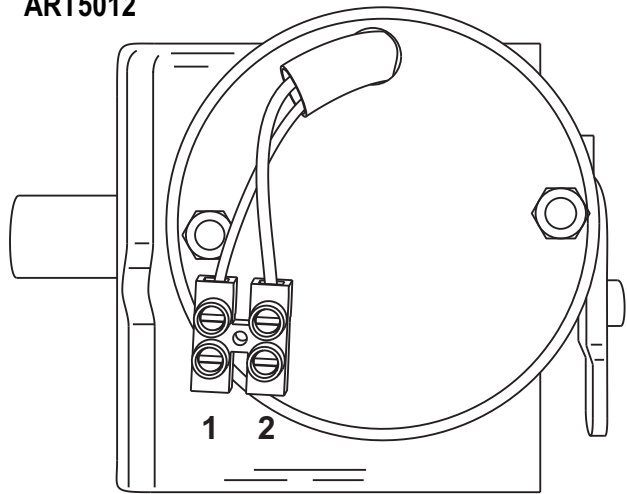
- 1 Closing limit switch with operator installed on the right;
opening limit switch with operator installed on the left.
- 2 Device for limit switch (1) adjustment.
- 3 Opening limit switch with operator installed on the right;
closing limit switch with operator installed on the left.
- 4 Device for limit switch (3) adjustment.
- 5 Unlocking device for manual operation.

ELECTRICAL CONNECTIONS

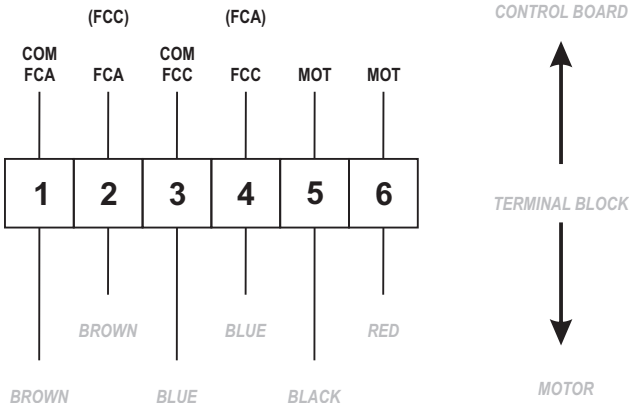
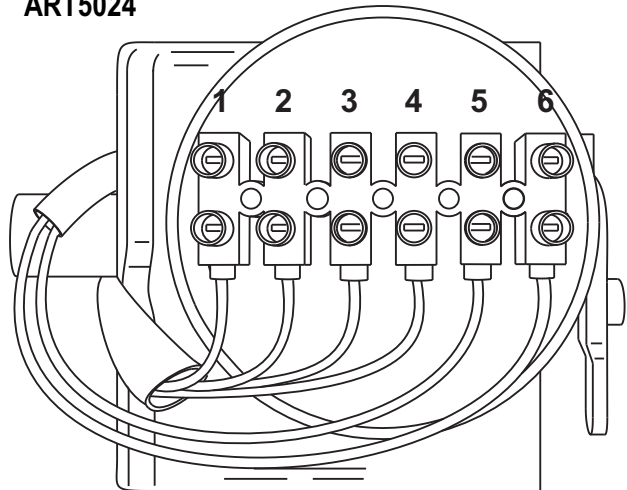
ART5000



ART5012



ART5024



ELECTRICAL CONNECTIONS

UK

ART5000 (230Vac)

- 1 Common Opening limit switch
- 2 Opening limit switch; closing limit switch with operator installed on the left.
- 3 Common Closing limit switch
- 4 Closing limit switch; opening limit switch with operator installed on the left.
- 5-6-7 230V motor power supply; 6 is the common wire

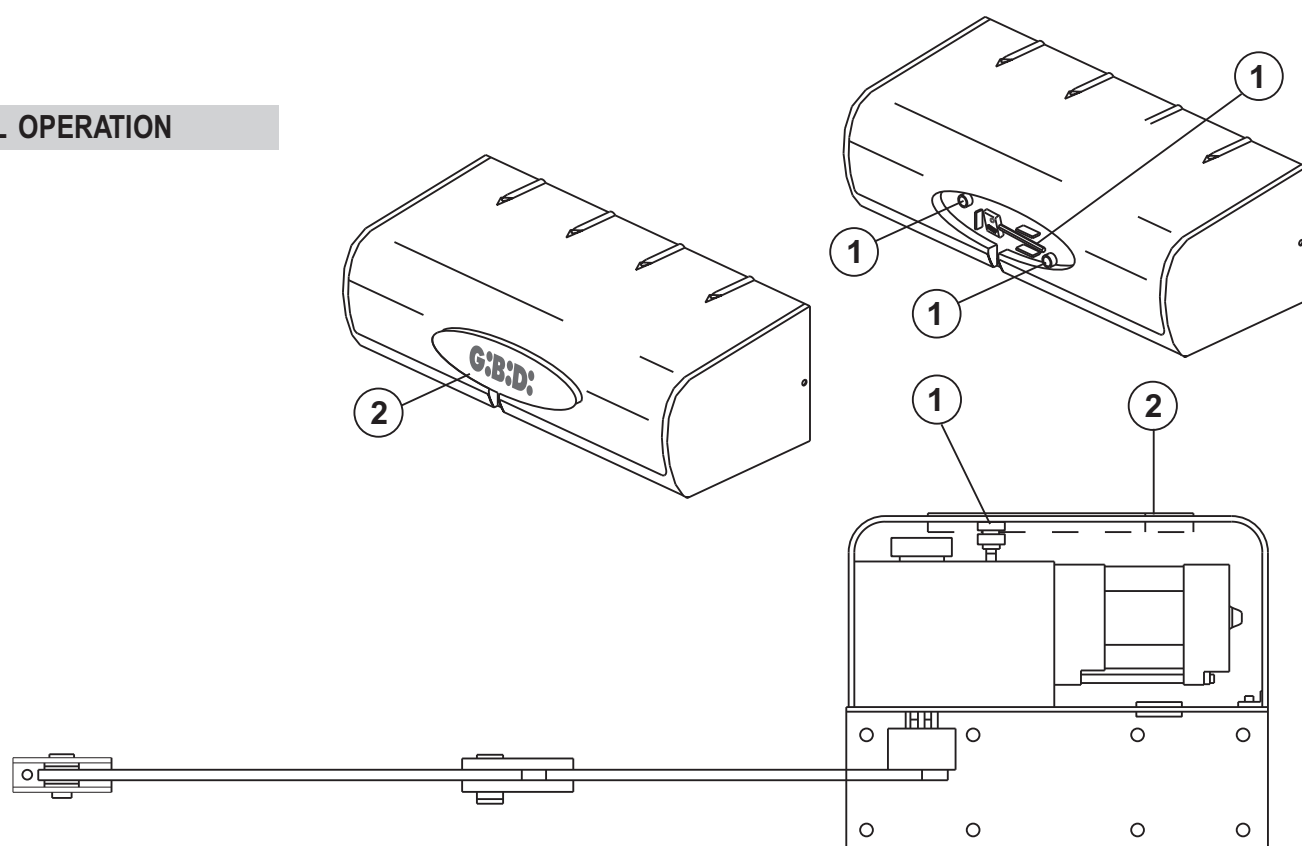
ART5012 (12Vdc)

- 1-2 12Vdc motor power supply

ART5024 (24Vdc)

- 1 Common Opening limit switch
- 2 Opening limit switch; closing limit switch with operator installed on the left.
- 3 Common Closing limit switch
- 4 Closing limit switch; opening limit switch with operator installed on the left.
- 5-6 24Vdc motor power supply

MANUAL OPERATION



UK

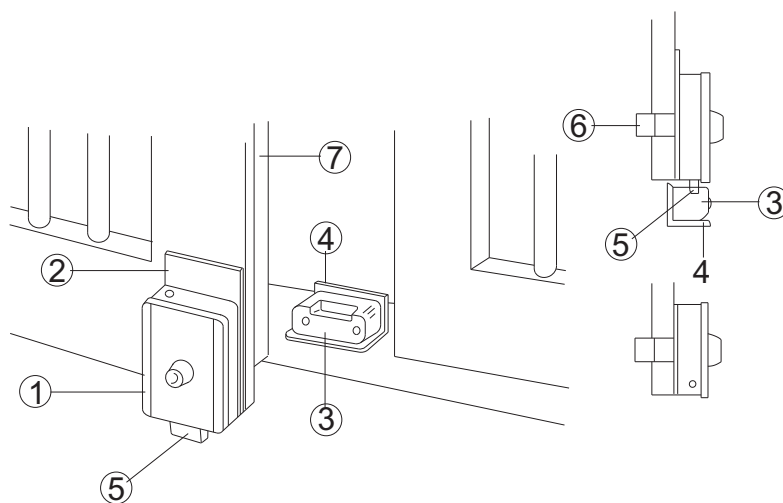
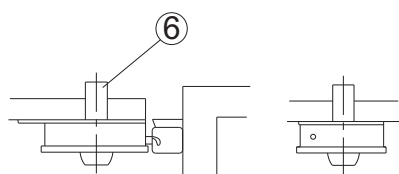
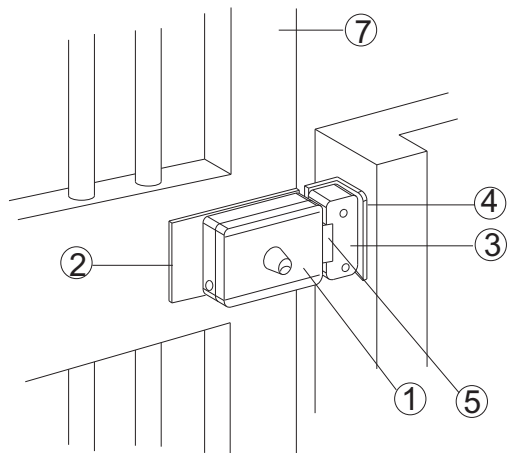
DEVICE FOR MANUAL OPERATION

Remove the lock cover (2) which allows inserting the key (1) to unlock the operator.

Turn the key (1) clockwise until it stops without forcing it and carry out the manual operation. To reset, turn the key (1) anticlockwise until it stops without forcing it. Remove the key (1) and replace the lock cover (2).

WARNING: Carry out the manual operations with the motor off.

ELECTROLOCK



UK

MOUNTING THE ELECTROLOCK

- 1 Electrolock
- 2 electrolock fixing plate
- 3 Bolt hooker
- 4 Bolt hooking rabbet
- 5 Bolt
- 6 Key cylinder (on request)
- 7 Gate

CE Declaration of conformity

The manufacturer:

GI.BI.DI. S.r.l.

Via Abetone Brennero, 177/B,
46025 Poggio Rusco (MN) ITALY

Declares that the products:

Electromechanical operators: ART5000, ART5012, ART5024

Are in conformity with the following CEE Directives:

- **LVD Directive 2006/95/CE and subsequent amendments;**
- **EMC Directive 2004/108/CE and subsequent amendments;**

and that the following harmonised standards have been applied:

- **EN61000-6-1, EN61000-6-3, EN60335-1**

Date 06/11/13

The legal Representative Michele Prandi

A handwritten signature in black ink, consisting of a large, stylized 'M' followed by a vertical line and a small flourish at the bottom.

NOTE

NOTE

NOTE



GI.BI.DI. S.r.l.
Via Abetone Brennero, 177/B
46025 Poggio Rusco (MN) - ITALY
Tel. +39.0386.52.20.11
Fax +39.0386.52.20.31
E-mail: comm@gibidi.com

Numero Verde: 800.290156



www.gibidi.com